

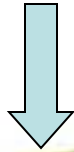


**Brown Trout Actually Leaping INTO
the Pipe**

Brook Trout (*Salvelinus fontinalis*)

Char comes from Gaelic term *caera* meaning “blood colored”

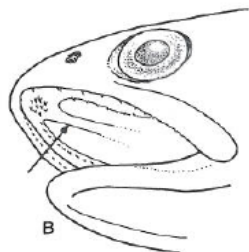
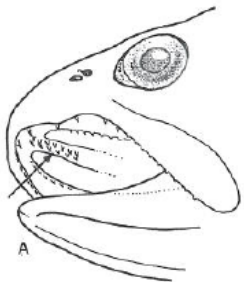
Dark background,
light spots



fontinalis means “living in springs”

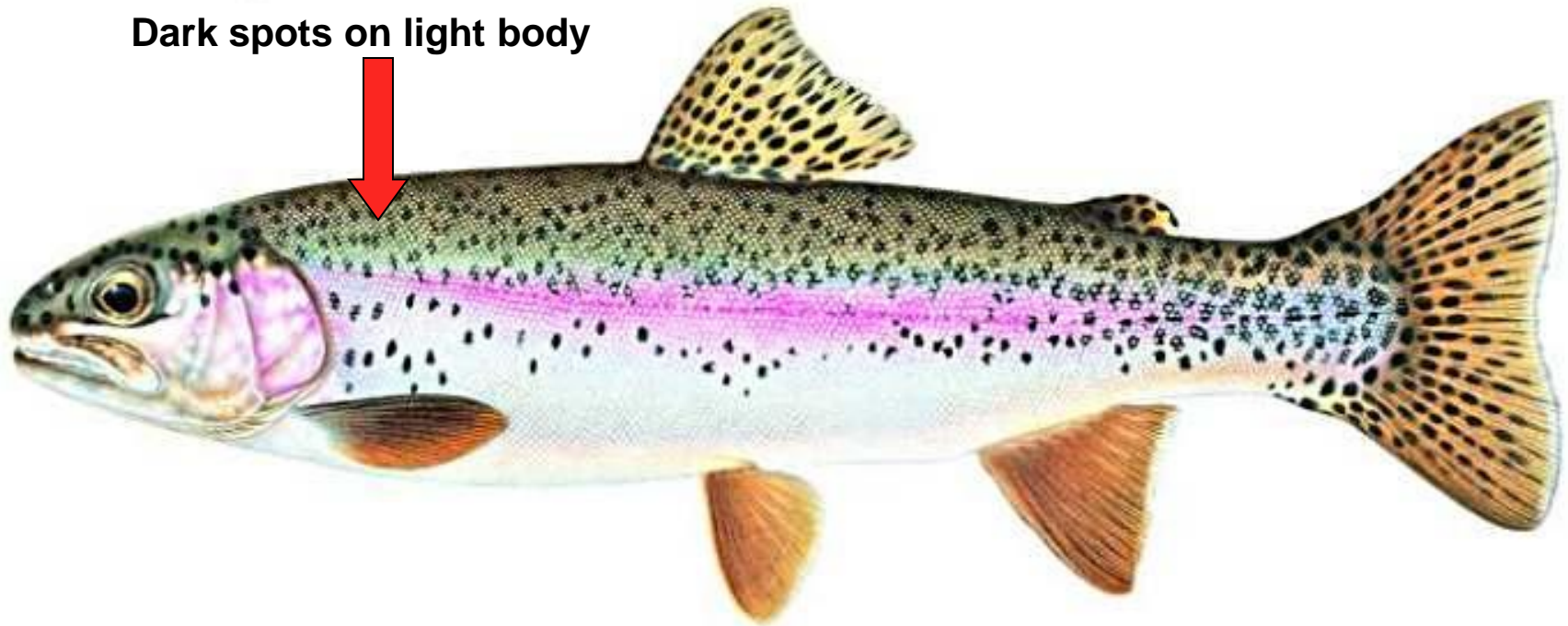


Lacks vomer teeth



Brook Trout are native to Apalachia
From Newfoundland to North Georgia

Rainbow Trout (*Oncorhynchus mykiss*)



Dark spots on light body

Native to West Coast of North America

Spring spawner

Brown Trout (*Salmo trutta*)

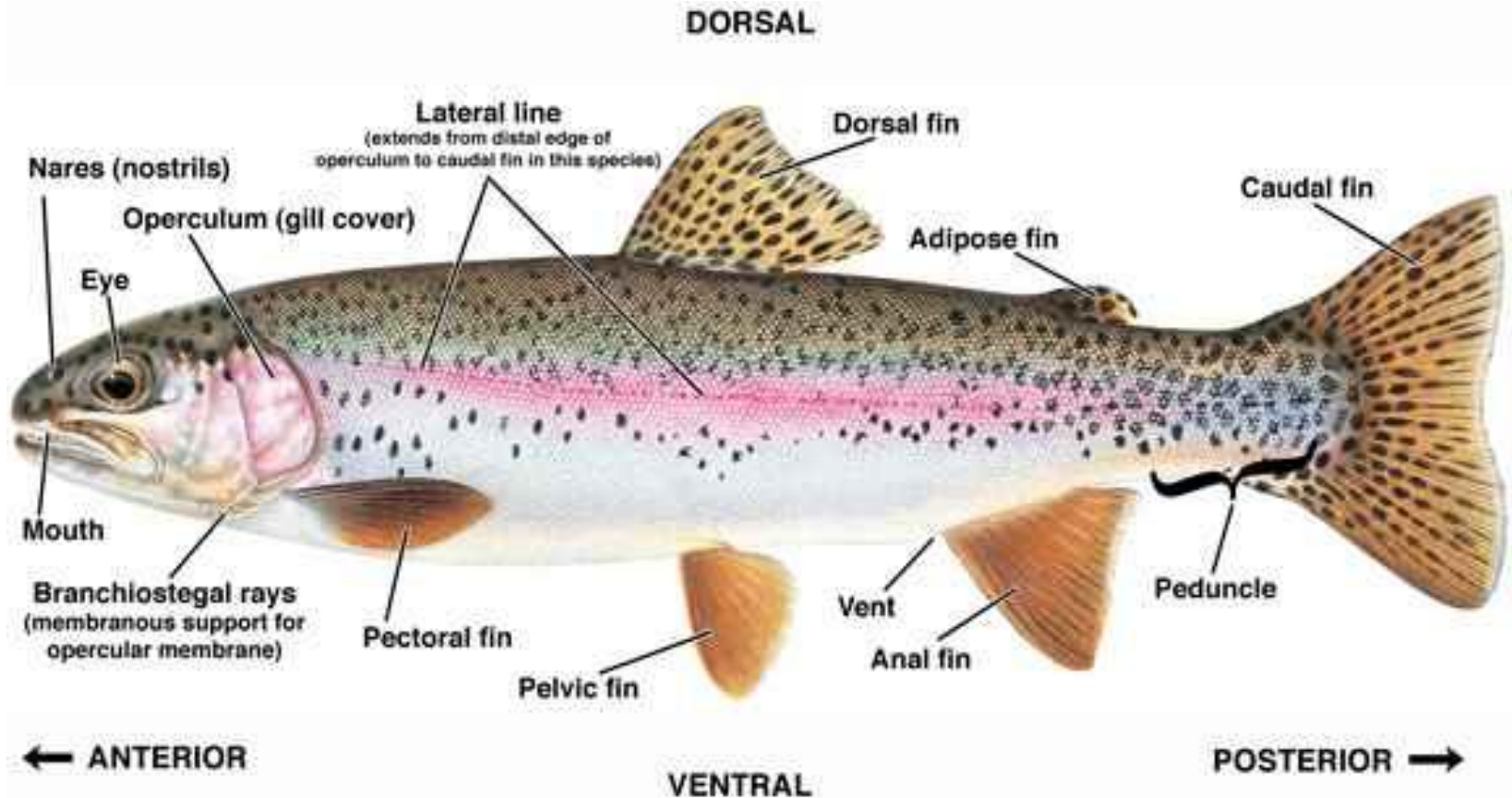
***Salmo* means “to leap”**

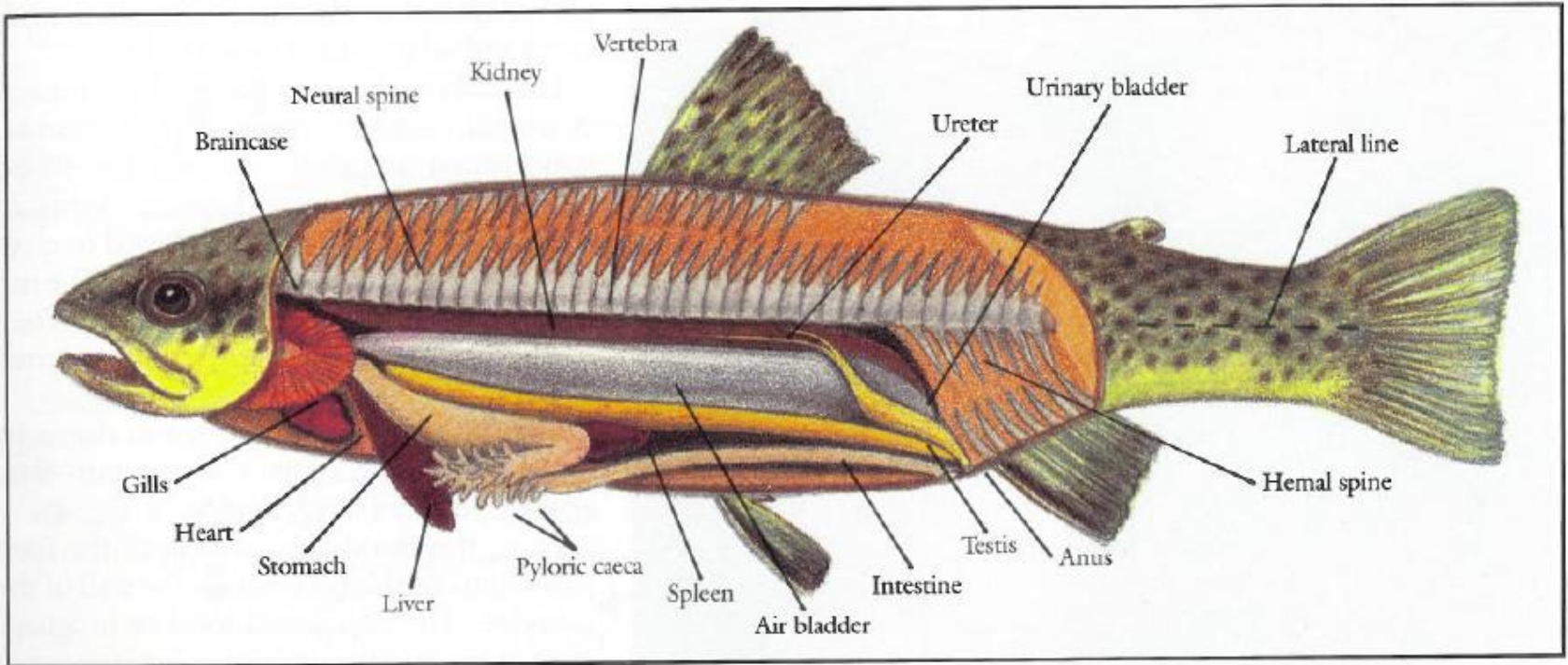
Brown trout are native to Eurasia



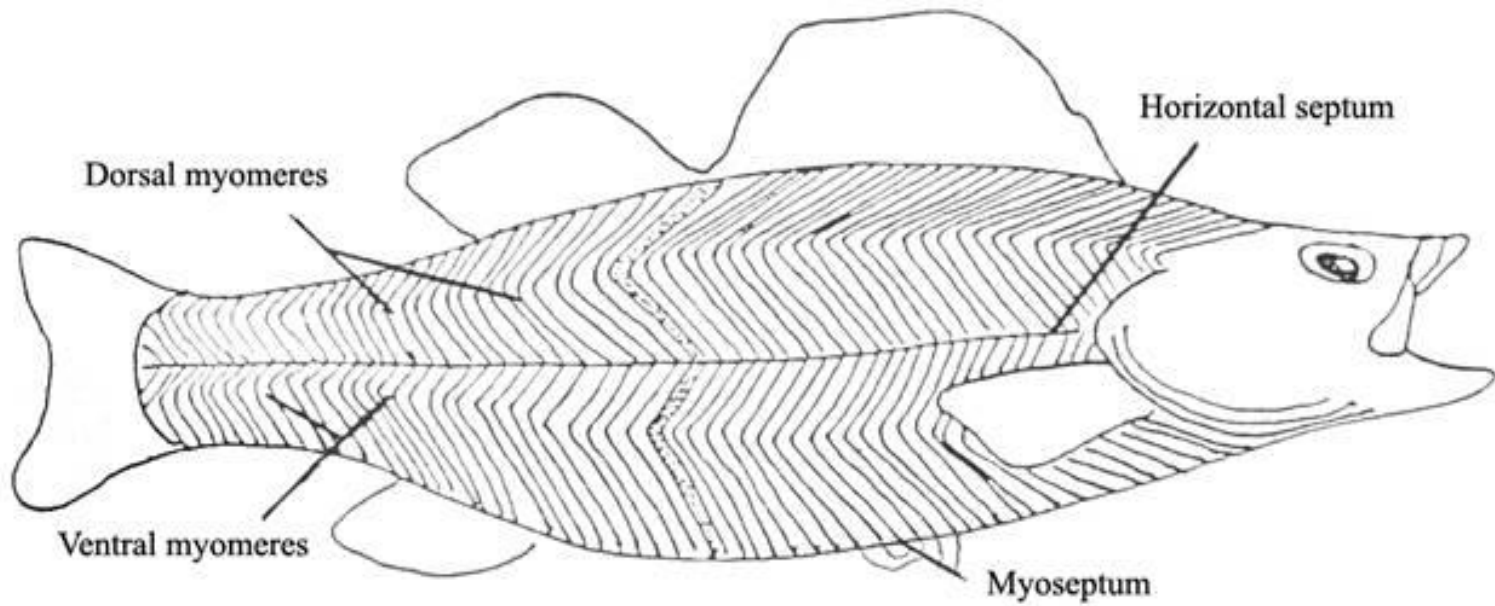
Spawns in the Fall

Rainbow Trout

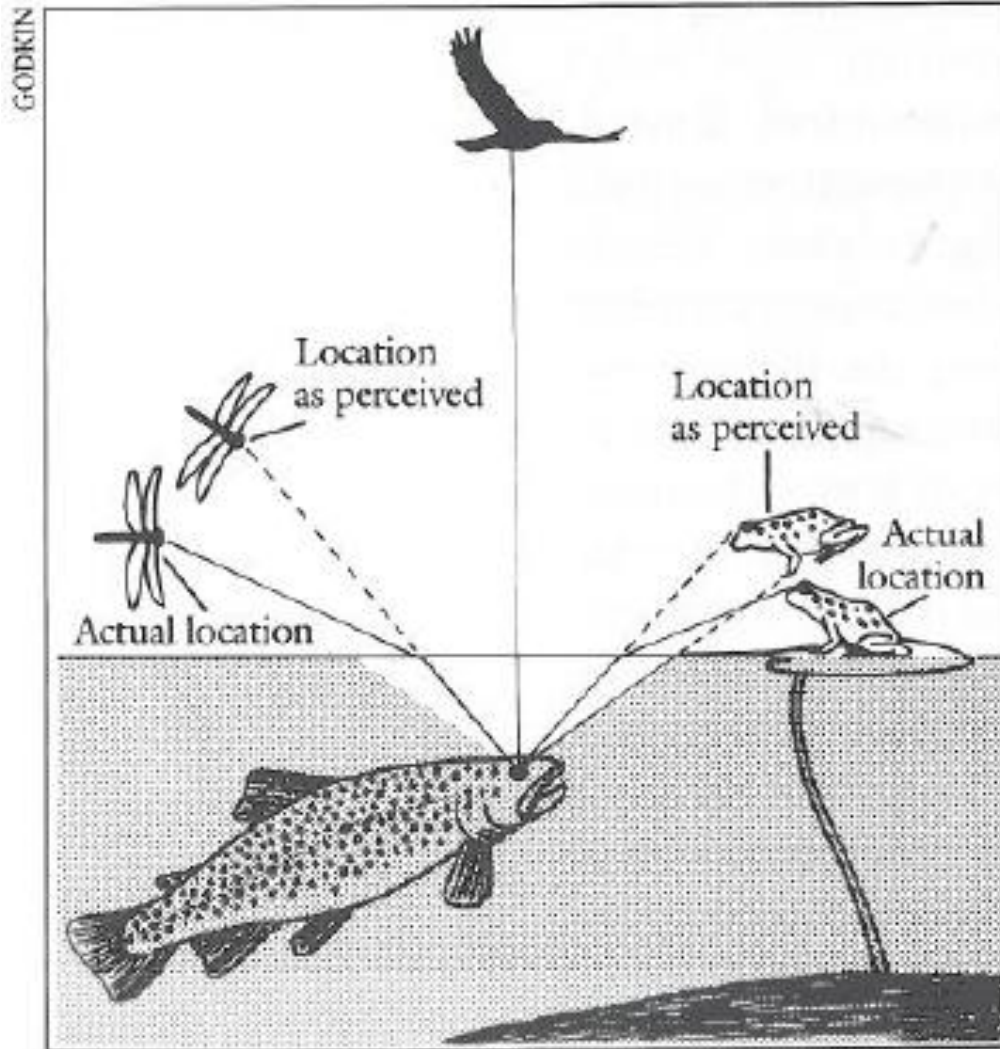




Trout Muscles



Sight and Water Refraction





Brook Trout Utilizing Structure

Rainbow on the Soque River



Kentucky Rainbow



Appalachian Brook Trout



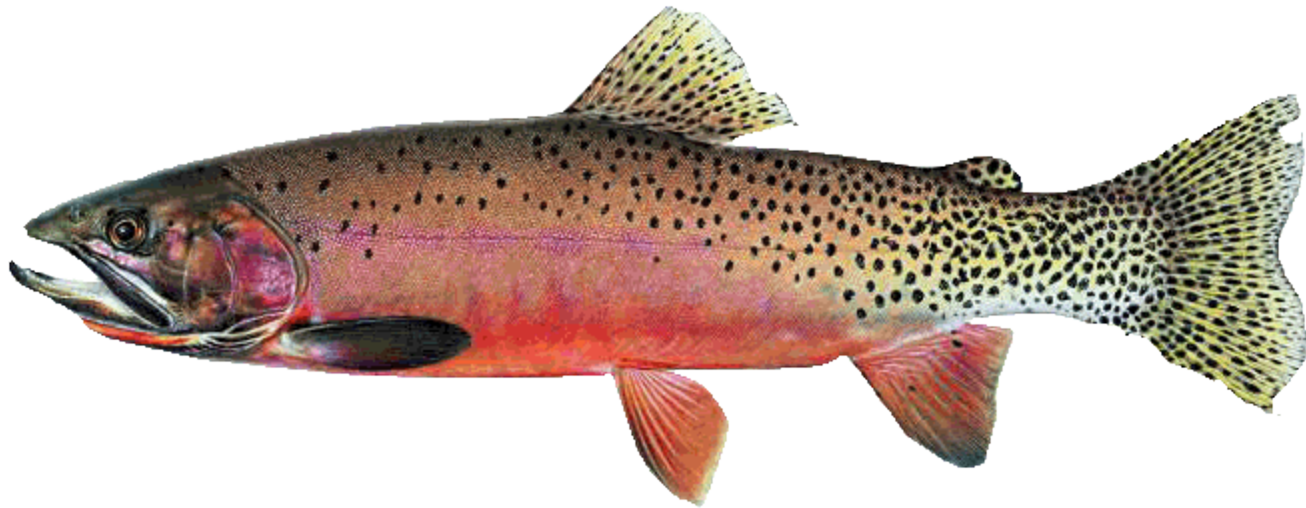
Apache Trout



Lahontan Trout



Colorado West Slope Cutthroat



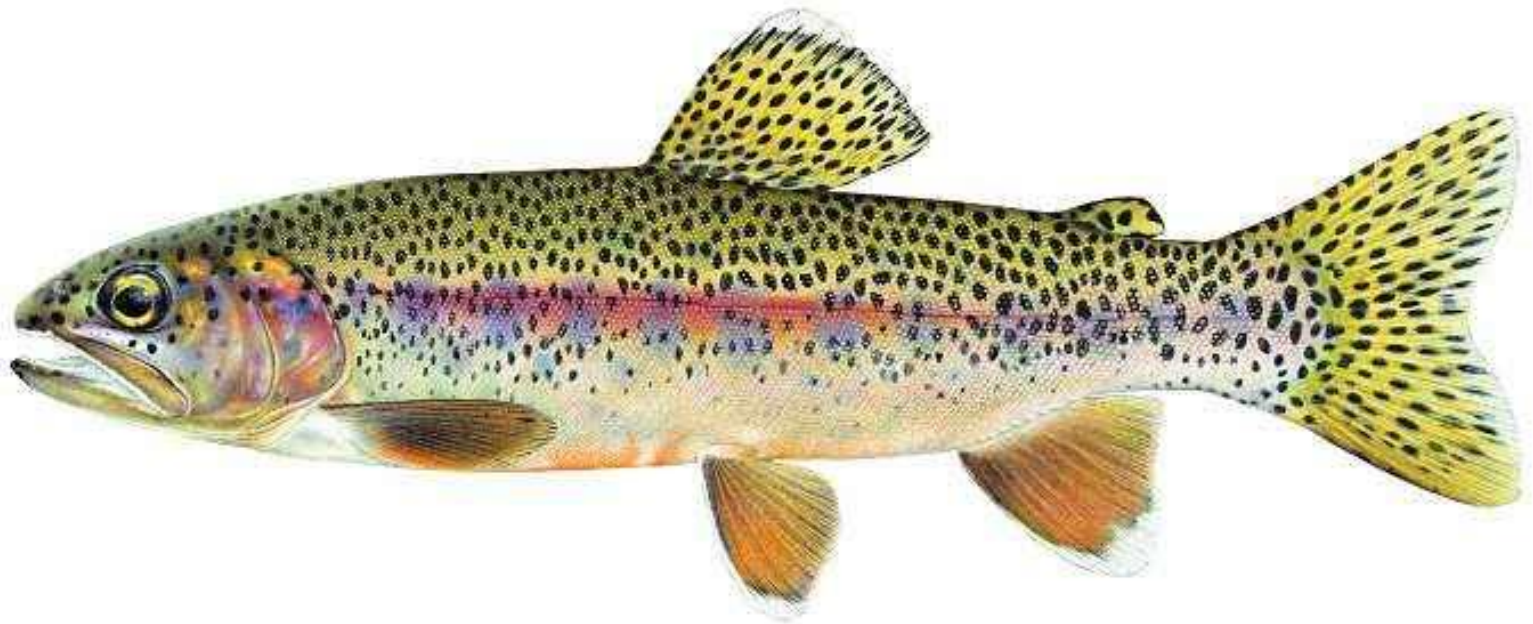
Colorado Greenback Cutthroat



Golden Trout



Kern River Rainbow



Redband Trout



Coho Salmon

